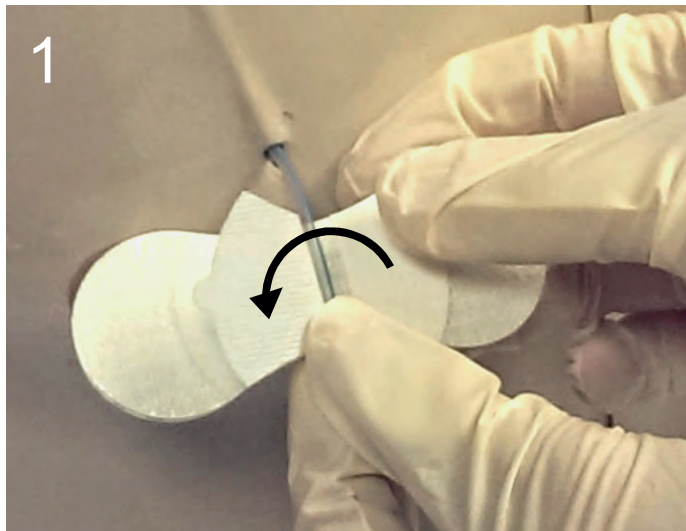


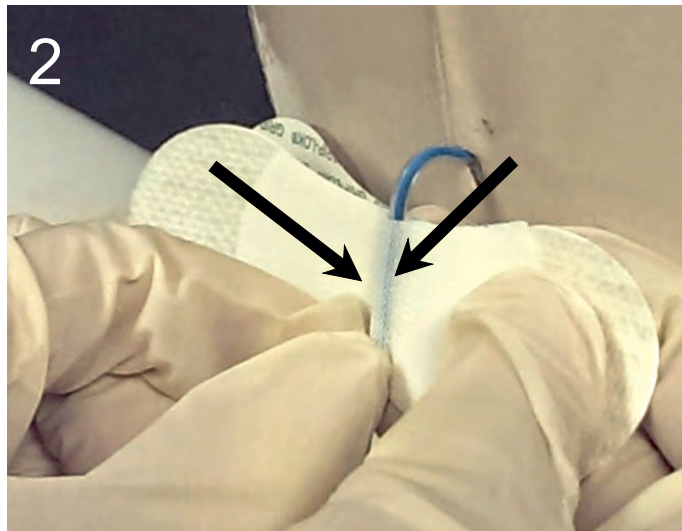
GRIP-LOK® APPLICATION GUIDE

3300M Medium for Securement of Hickman Lines

Prepare the skin according to the standard hospital protocol for dressing application.



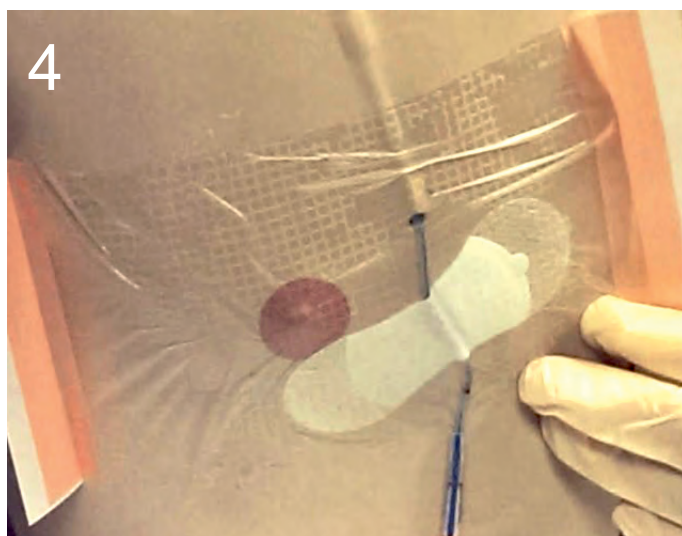
Open the top flap and remove the inside liner. Slide the Grip-Lok® under the Hickman line.



Firmly secure the Hickman line by closing the top flap and then **pinching around and along the length of the line.**



Hold the Grip-Lok® and line in position by placing thumb on the tabbed side, away from the centre section. Pull the lower release liner on the non-tabbed side and adhere to the skin.



Holding the Grip-Lok® on the tab side, remove the remaining release liner and secure to the skin. Then gently press down around the edges and top surface of the Grip-Lok® to ensure the adhesive connects well to the skin and to the line. **FILM DRESSING (TEGADERM) SHOULD THEN BE APPLIED.**



Grip-Lok is a trademark of TIDI Products, LLC

Tel: 023 8066 9000



info@blueboxmedical.co.uk

Grip-Lok® NHS Supply
Chain code: ELW704
Available on prescription
(FP10) code: 3300M-10PK



BLUE BOX
MEDICAL LTD

www.blueboxmedical.co.uk



AG025
01/17 - C